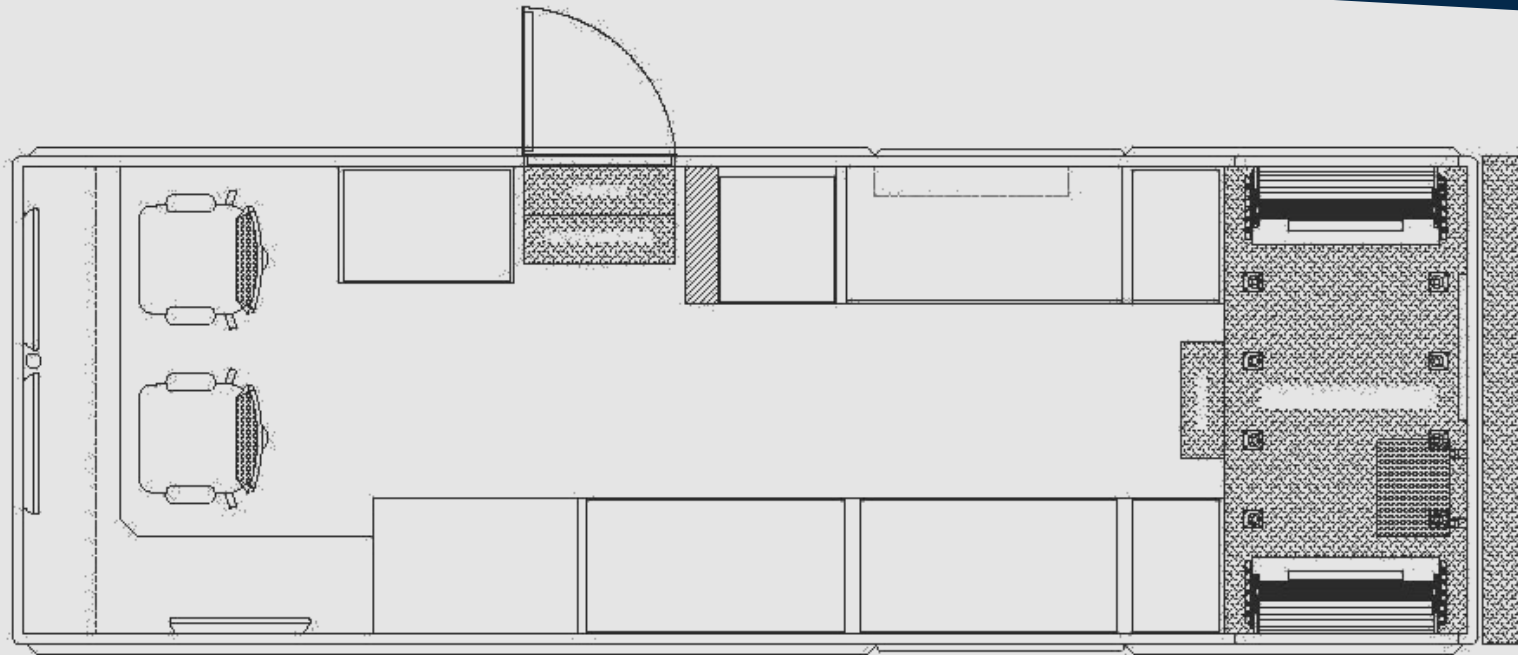


25-Ft. Custom Technical Response Trailer

Emergency Vehicles, Inc.
800-848-6652
sales@evi-fl.com



20YR
Modular Body
Warranty

10YR
Paint
Warranty

5YR
Electrical
Warranty

12MO
Conversion
Warranty

This custom 25-Foot bomb / EOD unit was designed and built for Cabarrus County Sheriff's Office and mounted on a Freightliner M2 2-door chassis. The exterior of this unit includes a fully integrated command area, four compartments, an electric awning with LED light, a Will-Burt Night Scan LED light tower, a 16,500 LB electric winch mounted inside the bumper extension, On-Spot tire chains, a custom rear roof access ladder, two bi-fold robot ramps, 13.5kW Durawatt diesel generator. On the interior it includes five storage closets with multiple adjustable shelves, four storage cabinets, multiple fully integrated workstations, Wi-Fi and air TV capabilities, fully integrated electronics rack, rear fold-down table and bench, and all emergency and interior lighting is LED.

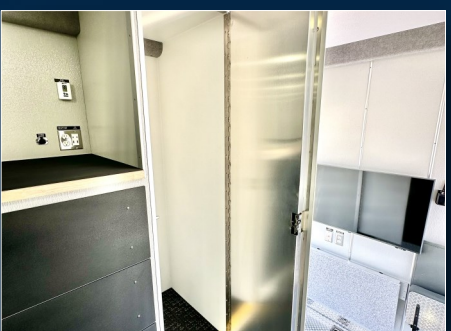
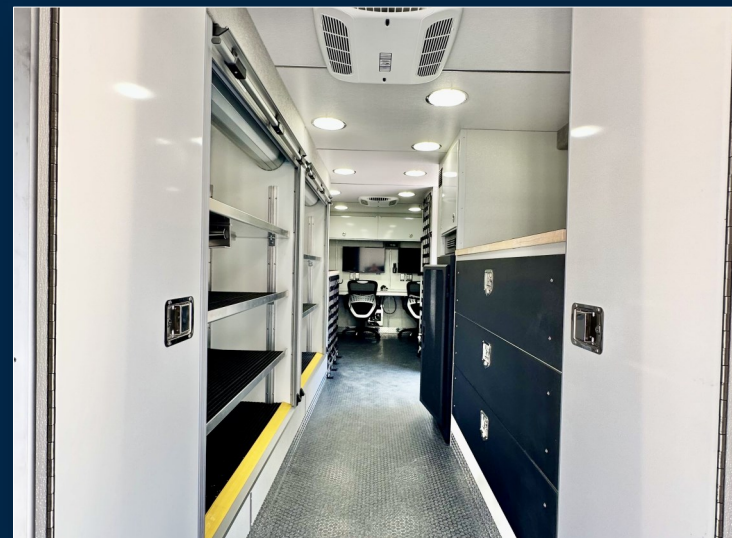
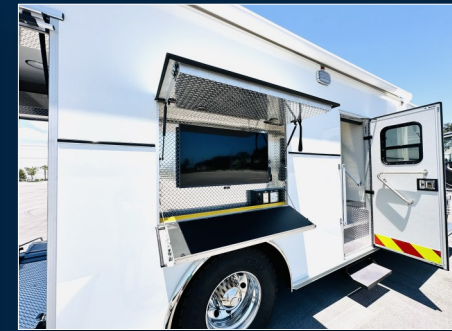
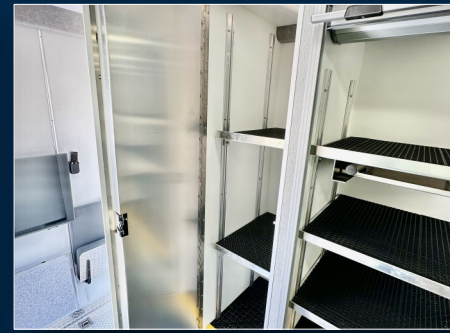
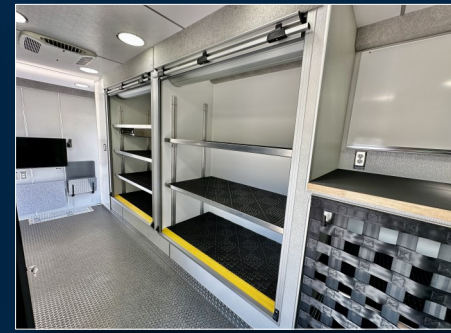
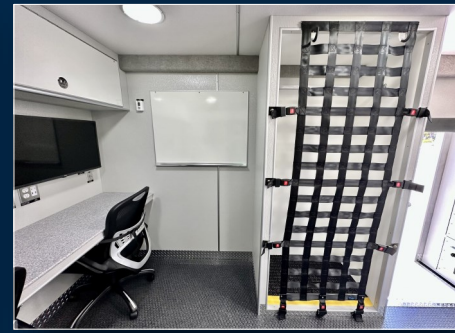
For more information on this unit visit www.evi-fl.com/3134

25-Ft. Custom Bomb / EOD Unit



705 13th Street, Lake Park, FL 33403

For more information on this unit visit www.evi-fl.com/3134



- ◆ Integrated Exterior Command Area
- ◆ (4) Exterior Compartments
- ◆ Electric Awning w/ LED Lighting
- ◆ Will-Burt Night Scan LED Light Tower
- ◆ 16,500 LB Winch in Bumper Extension
- ◆ On-Spot Tire Chains
- ◆ Custom Roof Access Ladder
- ◆ (2) Bi-Fold Robot Ramps
- ◆ (5) Interior Storage Closets
- ◆ (4) Interior Storage Cabinets
- ◆ Multiple Workstations
- ◆ 13.5kW Durawatt Diesel Generator
- ◆ Wi-Fi & Air TV Capabilities
- ◆ Fully Integrated w/ Electronics Rack
- ◆ Rear Fold-Down Table & Bench
- ◆ LED Emergency & Interior Lights