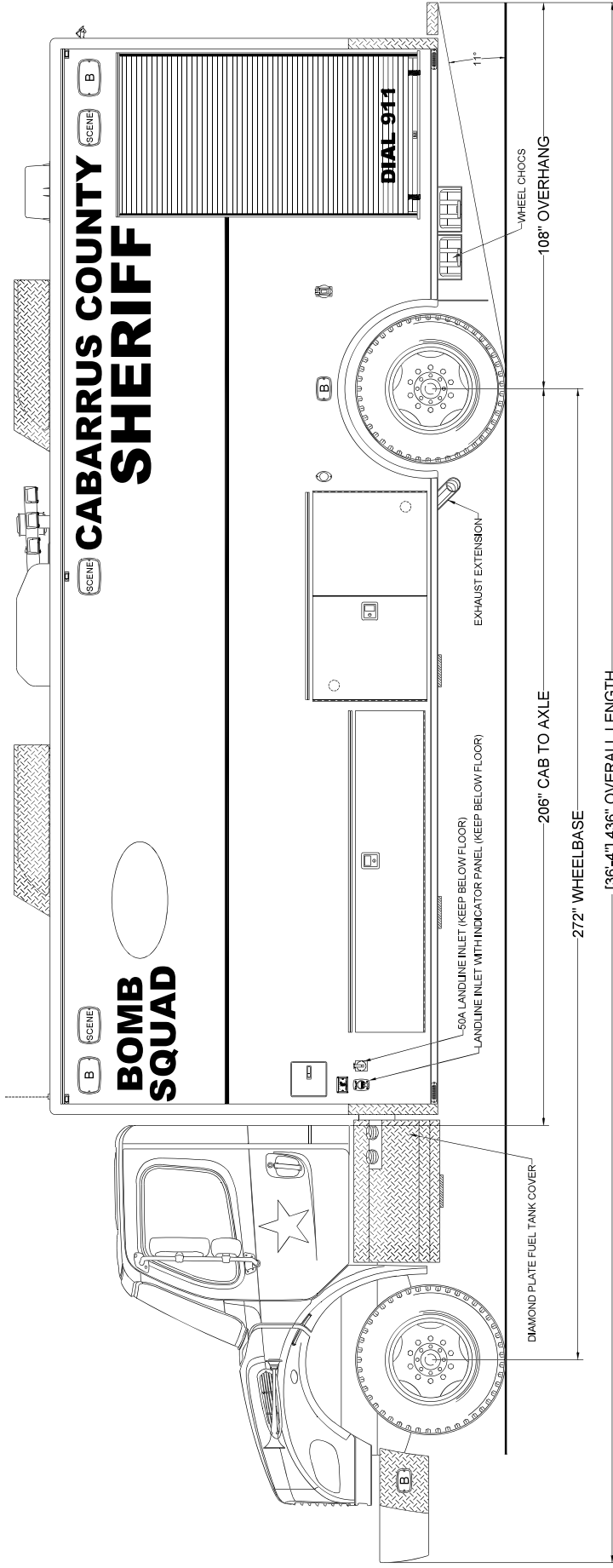


Cabarrus County Sheriff's Office
 Concord, North Carolina



705 13TH STREET, LAKE PARK, FL
 800-848-6652



PRODUCTION

NOTICE: THIS DRAWING IS A REPRESENTATION OF THE VEHICLE AND/OR COMPONENTS AS DESCRIBED IN THE SPECIFICATIONS. IT IS THE RESPONSIBILITY OF THE CUSTOMER TO VERIFY THE ACCURACY OF THE INFORMATION PROVIDED IN THE PRODUCTION PROCESS TO ACCOMMODATE BEST MANUFACTURING PRACTICES AND TO ENSURE WE PROVIDE A CONSISTENTLY HIGH QUALITY PRODUCT.

REVISION	DESCRIPTION	DATE
REVISION 1	ISS-200502Z-ADPT	
REVISION 2	ISS-202202Z-PTN	
REVISION 3		
REVISION 4		
REVISION 5		
REVISION 6		

THESE DESIGN/ENGINEERING DRAWINGS AND ANY PARTS LISTED THEREIN ARE PROPRIETARY AND ARE FOR THE EXCLUSIVE USE OF THE CUSTOMER. ANY REUSE OR REPRODUCTION OF THIS DATA TO A THIRD PARTY IS PROHIBITED.
 DATE: 06/02/22

Streetside Overall

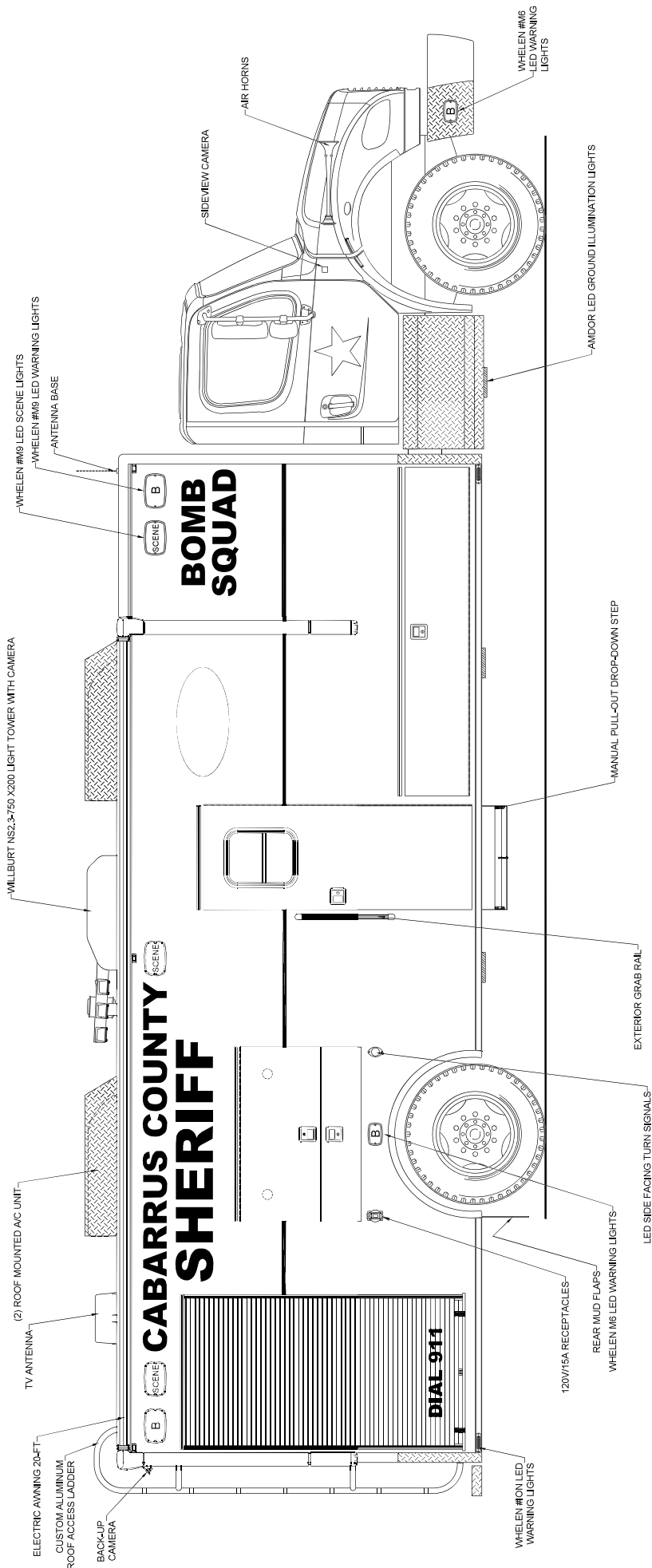


PRODDWVG3134_CABARRUS_NC13134_24WINS08-02-2022

Cabarrus County Sheriff's Office Concord, North Carolina



705 13TH STREET, LAKE PARK, FL
800-848-6652



PRODUCTION

NOTICE: THIS DRAWING IS A REPRESENTATION OF THE VEHICLE AND/OR COMPONENTS AS DESCRIBED IN THE SPECIFICATIONS. IT IS THE RESPONSIBILITY OF THE CUSTOMER TO VERIFY THE ACCURACY OF THE INFORMATION PROVIDED IN THIS DRAWING AND TO ENSURE THAT THE PRODUCTION PROCESS TO ACCOMMODATE BEST MANUFACTURING PRACTICES AND TO ENSURE WE PROVIDE A CONSISTENT, HIGH-QUALITY PRODUCT.

REVISION 1	DATE: 08/22/2021	BY: [Signature]
REVISION 2	DATE: 08/22/2021	BY: [Signature]
REVISION 3	DATE: 08/22/2021	BY: [Signature]
REVISION 4	DATE: 08/22/2021	BY: [Signature]
REVISION 5	DATE: 08/22/2021	BY: [Signature]
REVISION 6	DATE: 08/22/2021	BY: [Signature]

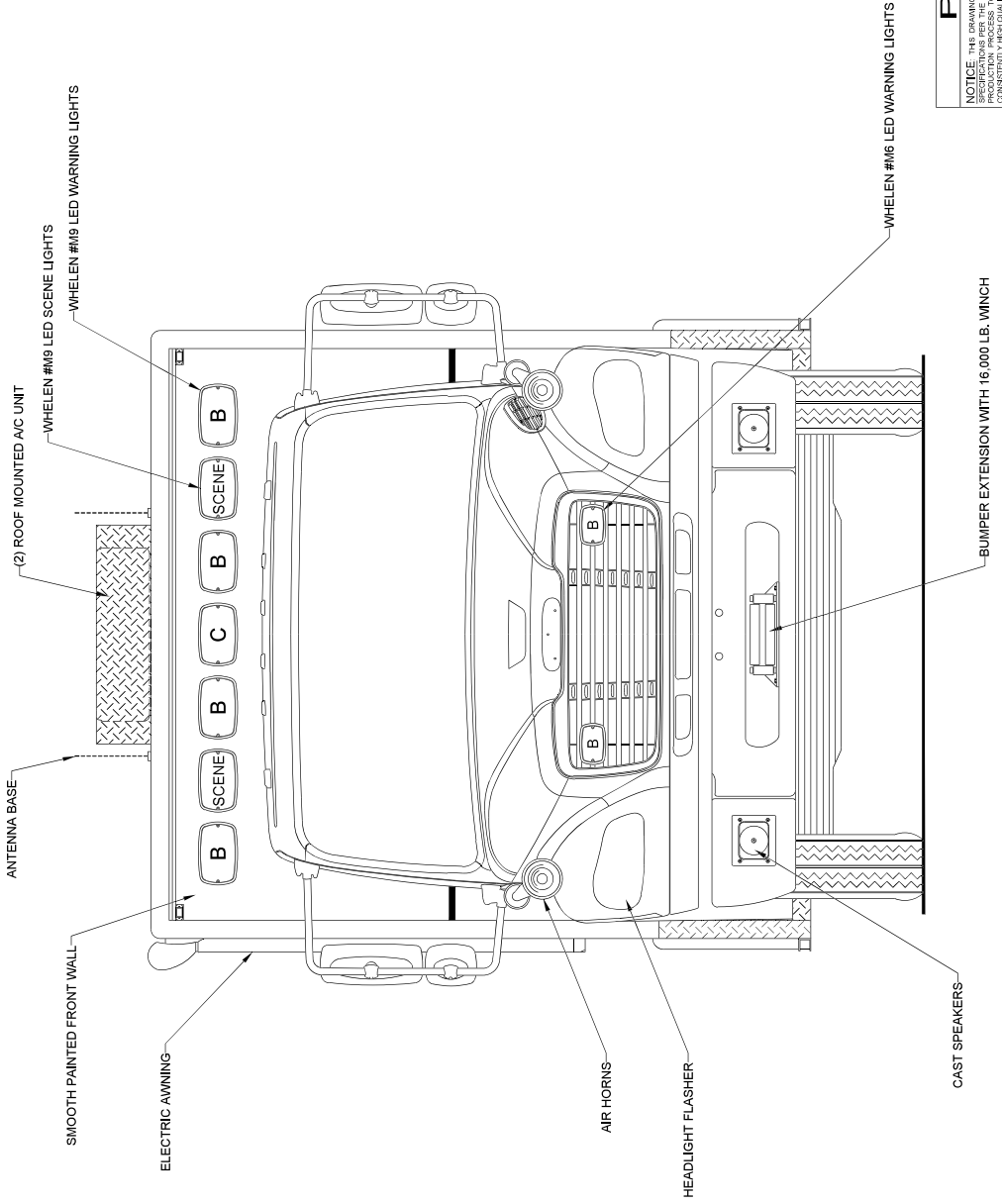
Curbside Overall



Cabarrus County Sheriff's Office Concord, North Carolina



705 13TH STREET, LAKE PARK, FL
800-848-6652



PRODUCTION

NOTICE: THIS DRAWING IS A REPRESENTATION OF THE VEHICLE AND/OR COMPONENTS AS DESCRIBED IN THE SPECIFICATIONS. IT IS NOT A CONTRACT. THE MANUFACTURER SHALL BE RESPONSIBLE FOR THE PRODUCTION PROCESS TO ACCOMMODATE BEST MANUFACTURING PRACTICES AND TO ENSURE WE PROVIDE A CONSISTENTLY HIGH QUALITY PRODUCT.

REVISION 1	MS-2006022-ADMT
REVISION 2	MS-2022352-FR
REVISION 3	-
REVISION 4	-
REVISION 5	-
REVISION 6	-

THESE DESIGN/ENGINEERING DRAWINGS ARE THE PROPERTY OF EVI. THEY ARE NOT TO BE REPRODUCED OR TRANSMITTED IN ANY FORM OR BY ANY MEANS, ELECTRONIC OR MECHANICAL, INCLUDING PHOTOCOPYING, RECORDING, OR BY ANY INFORMATION STORAGE AND RETRIEVAL SYSTEM. WITHOUT THE WRITTEN PERMISSION OF EVI.

P.A.R.T. I.S. P.R.O.H.I.B.I.T.E.D.

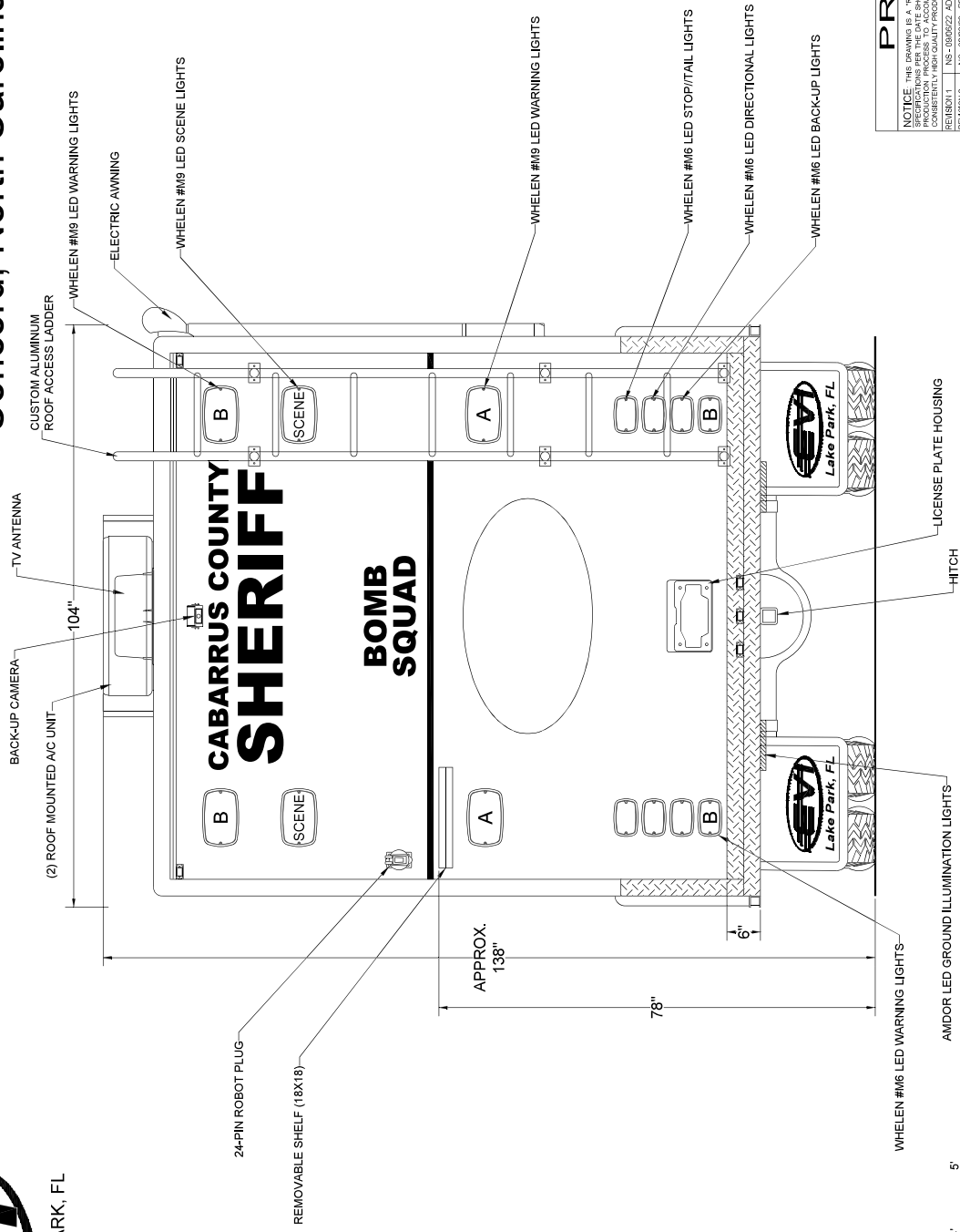
DATE: 06/02/22

Front View

Cabarrus County Sheriff's Office Concord, North Carolina



705 13TH STREET, LAKE PARK, FL
800-848-6652



Rear View

PRODUCTION

NOTICE: THIS DRAWING IS A REPRESENTATION OF THE VEHICLE AND/OR COMPONENTS AS DESCRIBED IN THE SPECIFICATIONS. THE MANUFACTURER SHALL BE RESPONSIBLE FOR THE PRODUCTION PROCESS TO ACCOMMODATE BEST MANUFACTURING PRACTICES AND TO ENSURE WE PROVIDE A CONSISTENTLY HIGH-QUALITY PRODUCT.

REVISION 1	MS-1006252-ADH
REVISION 2	MS-1022352-PR
REVISION 3	
REVISION 4	
REVISION 5	
REVISION 6	

THESE DESIGN/ENGINEERING DRAWINGS ARE THE PROPERTY OF EVI. THEY ARE NOT TO BE REPRODUCED OR TRANSMITTED IN ANY FORM OR BY ANY MEANS, ELECTRONIC OR MECHANICAL, INCLUDING PHOTOCOPYING, RECORDING, OR BY ANY INFORMATION STORAGE AND RETRIEVAL SYSTEM. WITHOUT THE WRITTEN PERMISSION OF EVI, THIS DRAWING IS THE PROPERTY OF EVI. P A R T 1 5 P R O H I T 1 5 D

DATE: 06/22/22

PRODDWVG3134_CABARRUS_NC13134_24WINS108-02-2022